



Aluminium TIMBER EFFECT



Realistic Wood finishes With Non Combustible Fire performance

Deliver Class A1 or Class A2 (EN13501-1) classified fire resistant walls & ceilings, in a range of realistic Aluminium wood effect finishes for both internal & external applications.

Underground stations, external cladding subject to Approved Document B regulation, or large station concourses are just some of the building regulatory examples that will demand non-combustible walls & ceilings.

The BCL 'TIMBER EFFECT' range has been designed to provide professionals with the freedom to create beautifully warm and natural wood aesthetics, whilst meeting the increasing fire safety requirements and demands of commercial construction.

Using an incredibly tough Polyurethane Powder Coating system to create the varied and accurate look of solid wood, the 'TIMBER EFFECT' range comes with all of the design and efficiency benefits of a BCL prefabricated slatted panel system, but with exceptional fire resistance, dimensional stability and overall durability of Aluminium.

Performance Benefits:

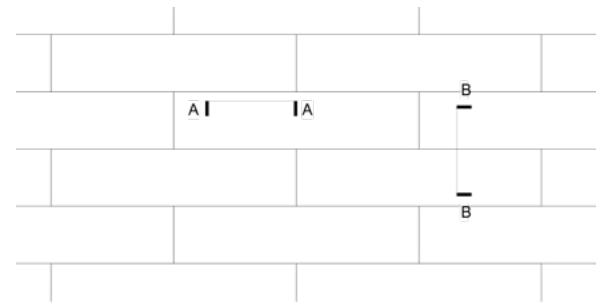
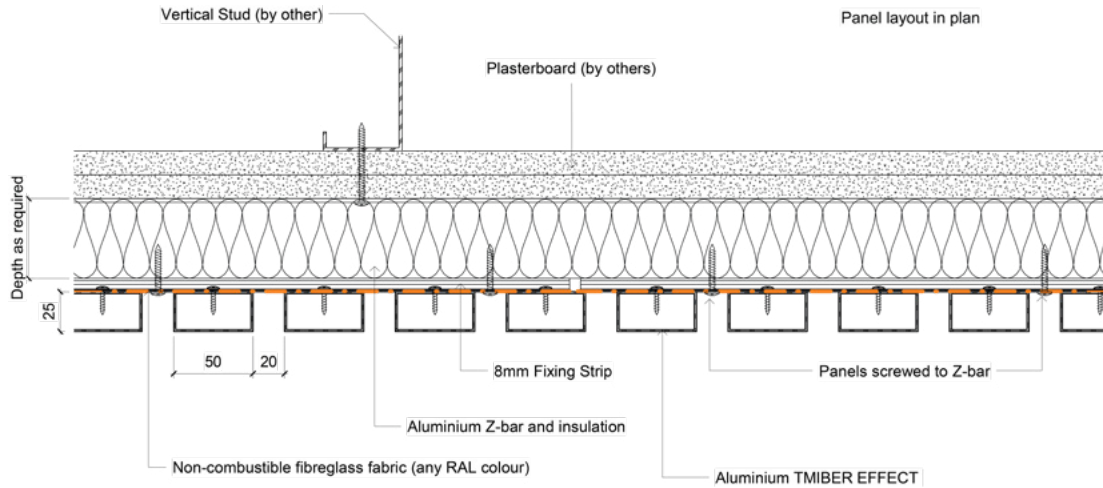
- » 35+ years colour durability
- » A1 or A2 EN13501-1 Fire Performance
- » Class A acoustic (internal panels only)
- » Suitable for High Moisture Environments
- » Dimensionally stable
- » 75% recycled content Aluminium available

BCL System Features:

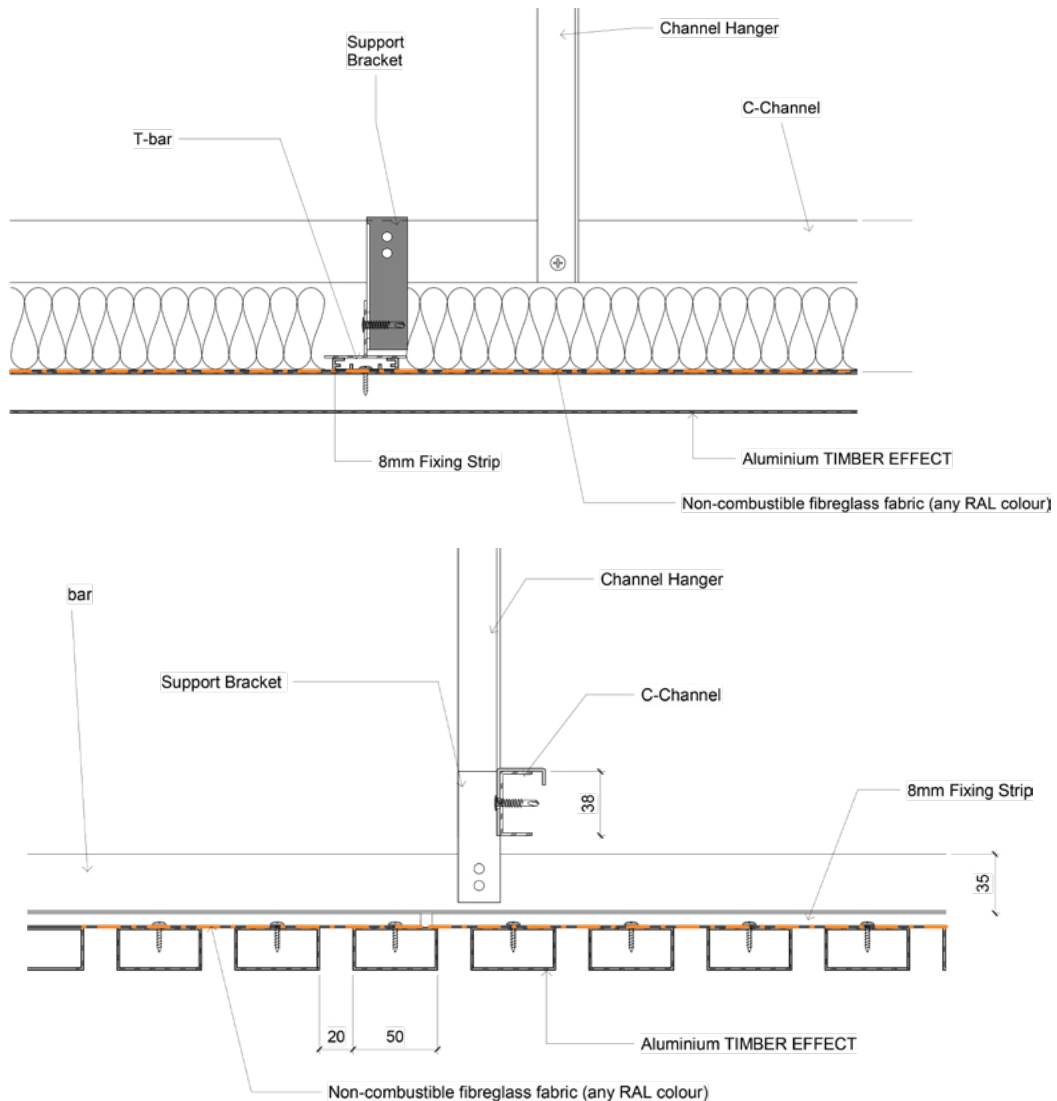
- » Full systems Fire TESTING to EN 13501-1
- » BIM level 4 Full system design (in Revit or similar)
- » ASIAD / SIDOS compliant systems available
- » Non-combustible RAL Colour acoustic fabrics
- » Direct Installation service (where available)

[Click Here to Download our 'TIMBER EFFECT' colour range](#)

TYPICAL WALL FIXING DETAIL



TYPICAL CEILING FIXING DETAIL





For more information on BCL Timber Panel systems and our Aluminium Timber Effect option you can visit our website by clicking [here](#).
Or simply call us direct on 01189 344 155 today!

BCL Timber Projects Ltd.
The Old Byre, Oakley Farm,
Pound Lane, Hurst,
Berkshire RG10 0RS

Tel: 0118 934 4155
Fax: 0118 934 4188
Email: info@bcl.uk.net

www.bcltimberprojects.co.uk

