



BCL Quick Delivery 'STOCK' panels

The ideal solution...

...for small builds and projects requiring pre-tested timber panels on-site ASAP.

The BCL 'STOCK' panel delivers beautiful solid timber slat finishes with high performance acoustics and up to Class B-s2,d0 Reaction to Fire (EN13501-1).

This panel range, developed to allow easy and rapid delivery, has been pre-tested in accordance with EN13501-1 and provides a compliant timber panel system that removes the requirement for any project specific testing, allowing Architects and Contractors to deliver solid timber slat finishes, with less hassle and overall lead-time / cost.

Internal Panels

The STOCK panel configuration provides a Class C acoustic absorbency when paired with one of our acoustic insulation options, creating a high performance composite acoustic panel system for internal areas, lowering ambient sound reverberation times and helping to meet any required acoustic compliance targets.

- » **Internal Walls**
- » **Internal Ceilings**

External Panels

The STOCK panel can also be used with an external grade insect mesh and comes with a maintenance free lasting FR treatment, pressure impregnated, to provide permanent fire performance in line with EN13501-1.

- » **External Walls / Cladding**
- » **External Ceilings / Soffits**

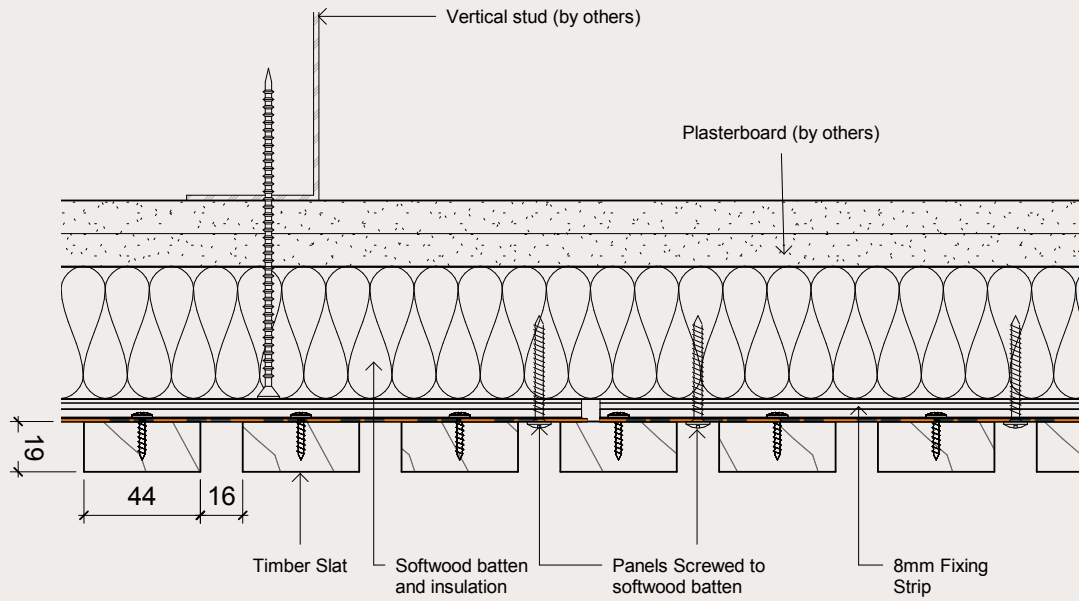
Features

- » Solid Sweet Chestnut (FSC or PEFC certified)
- » 44mm wide slats
- » 19mm deep
- » 16mm gap
- » FR pressure impregnation
- » Class C acoustic
- » NRC=0.8
- » Up to Euroclass B-s2,d0 Reaction to Fire classification
- » Single fixed panel size (designated by you - eg 600x2400mm long as you have stated)
- » Shop / Manufacturing drawings ONLY. (No detail design, setting out or layout drawings)

Benefits

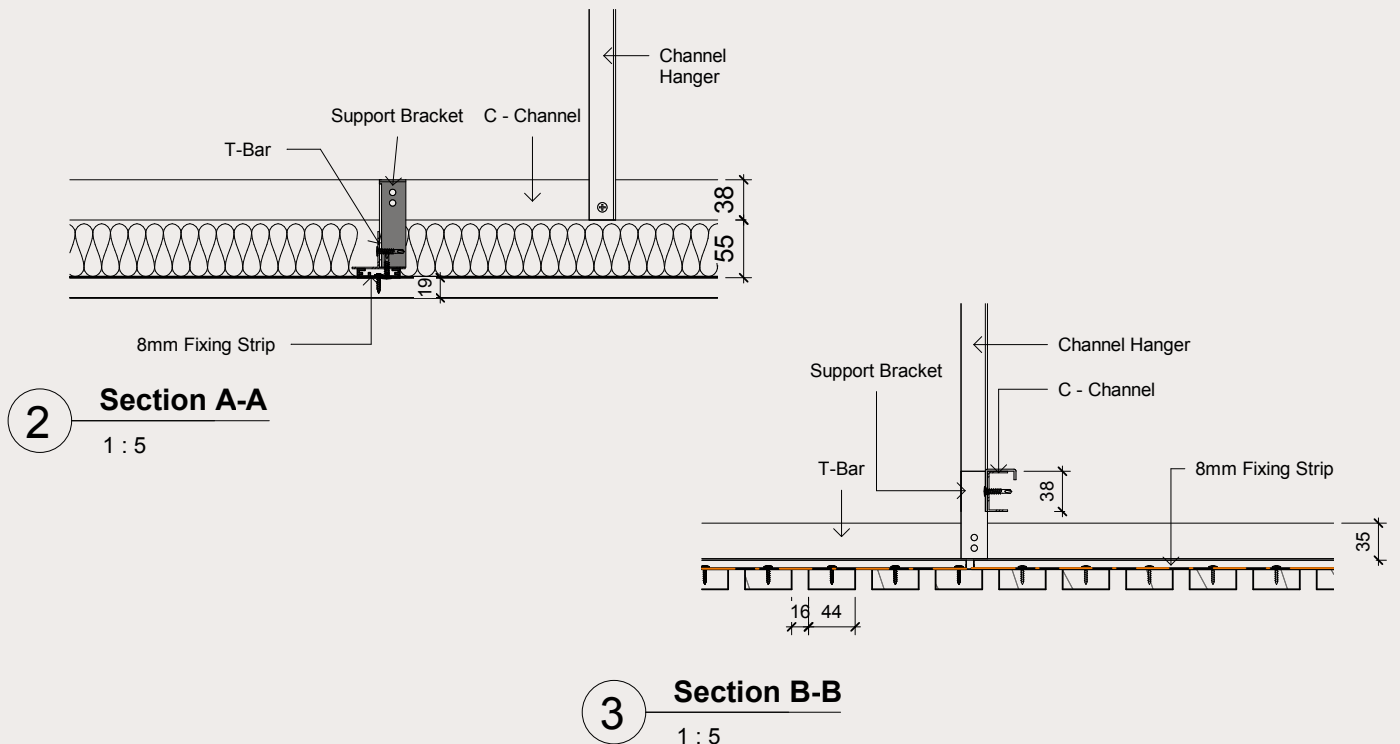
- » 20-30 year warranty
- » FSC or PEFC certified
- » Easy to install with FULL INSTALLATION SUPPORT from BCL
- » Reaction to Fire Performance up to Class B-s2,d0 (in accordance with EN13501-1)
- » Acoustic Class C rating (Internal only) (in accordance with BS EN ISO 11654:1997)
- » Secret Fixings (improves durability & aesthetics)
- » Sweet chestnut – Class 2 Durability for external use (EN350-2)
- » Can be stained / coated on site easily

TYPICAL WALL FIXING DETAIL



STOCK panels can be used for both horizontal AND vertical internal walls and can use a variety of fixing methods.

TYPICAL CEILING FIXING DETAIL



STOCK panels can be combined with any of our ceiling grids. CS-1 'Concealed Semi-fixed' grid shown here.



For more information on BCL Timber Panel systems and our Quick Delivery STOCK panel option you can visit our website by [clicking here](#).

Or simply call us direct on 01189 344 155 today!

BCL Timber Projects Ltd.

The Old Byre, Oakley Farm,
Pound Lane, Hurst,
Berkshire RG10 0RS

Tel: 0118 934 4155

Fax: 0118 934 4188

Email: info@bcl.uk.net

www.bcltimberprojects.co.uk

